

# CreativeCastle.com

Beads with ♥ from our house to yours! ©

2321 Michael Drive  
Newbury Park, CA 91320-3233  
877 Beads4U (877-232-3748)  
Phone: 805-499-1377  
Fax: 805-499-7923  
E-mail: [ctripp@creativecastle.com](mailto:ctripp@creativecastle.com)

Newsletter  
Finter '19  
(Fall-Winter)



Dear Beading Friends,

Happy Finter! I can't believe we are in the last season of 2019. This will conclude our 30th year in business. I want to thank you for the opportunity to be your LBS and for your support for all these years. Let's make 2020 our best year ever!

This season we have several returning teachers, as well as a newbie to our shop. Isabella Lam from Israel will be here in October teaching 4 classes. She is internationally known and we are lucky to have her. We are also hosting many trunk shows and other events for you. We are offering 5 special beading days in addition to our regular BATC on the second and fourth Tuesday of each month. We are also hosting a Bead in the New Year on New Year's Eve Day. Be sure to check out our Events page on our website as well as the calendar page on the last page of this newsletter for a complete listing.

We will be having a Labor Day Clearance sale September 3-8. There will be continuing markdowns as the sale continues so shop early for the best selection and often for great savings.

We are raising money for MANNA again this year. MANNA, our local food bank, helps families throughout the Conejo Valley. Our MANNA Fund Raiser will be November 19-24. Come Donate, Shop and Save. A \$5 donation gets you a 10% discount on your shopping trip, for a \$10 donation you will receive a 20% discount, a \$25 donation earns a 30% discount and for a \$40 donation you will receive 40% off your purchase. I hope you will support this charity. Last year we collected over \$1,400 in donations and gave away over \$6000 in discounts. I hope we can do this again this year. Thank you in advance for your generosity.

Please let us know if there is any beading need you have; we would like the opportunity to help. It is our goal to provide you with not only wonderful merchandise but also a fabulous environment in which to discover it as well as an extraordinary shopping experience.

Happy beading,

♥ Carole



Quote:

"Know and believe in yourself, then what others think won't disturb you." - William Feather



## Store Hours

Tue - Sat 10 - 6pm  
Sunday 12 - 5pm  
Monday Closed

## Come visit and see our wonderful Trunk Shows and events!

Special BATC September 1st - noon-5  
Labor Day Clearance Sale - September 3rd-8th  
Lissa Turunen Trunk Show - September 12th-15th  
Melissa Grakowsky-Shippee Trunk Show - September 20th-22nd  
Tracy Stanley Trunk Show October 4th-6th  
Beyond Beadery Swarovski Crystal Trunk Show - October 11th-13th  
Isabella Lam Trunk Show October 24th-27th  
Special BATC November 3rd - noon-5  
Nancy Cain Trunk Show November 7th-10th  
MANNA Fund Raiser November 19th-24th  
Special BATC November 23rd - noon-5  
Small Business Saturday November 30th  
Special BATC December 15th - noon-5  
Special BATC December 29th - noon-5  
Almost New Year's Eve Bead Day - December 31st - 10-4

(All trunk shows during regular store hours unless noted otherwise)



Finter Teachers

Inside this issue:  
September  
October  
November  
December  
Techniques...Classes  
and MORE!



# September

**Labor Day Clearance Sale**  
Tue 9/3-Sun 9/8 (during regular store hours)

**Beading Special**  
**Beading at the Castle** Sun 9/1 (noon-5)



## Corinne Loomer

### Bead Embroidery Independent Study



Tue 9/3 (11-3) AND  
Tue 10/1 (11-3) AND  
Tue 11/5 (11-3) AND  
Tue 12/3 (11-3)

\$150.00 for series  
+ supplies OR  
\$50.00 per class  
+ supplies

Prerequisites: Peyote  
Skill Level:  
All Skill Levels  
Technique:  
Peyote,  
Bead Embroidery

Unlike a highly structured class, this course allows you to be in control of your vision. The aim of this course of study is to help you stay focused, work independently, plan your creation, organize your ideas and learn how to make them a reality. Every month we'll discuss various topics about Bead Embroidery and how to make it work for you.



## Liisa Turunen

### Trunk Show

Fri 9/12-Sun 9/15 (during regular store hours)

Take 2 classes for \$185.00 • Take 3 classes for \$275.00  
Take all 4 days for \$360.00

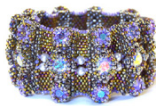
### Memory Lane Necklace



Thu 9/12 (10-5)  
\$95.00 + supplies  
Prerequisites:  
Peyote, RAW,  
Herringbone  
Skill Level:  
Intermediate  
Technique: Peyote,  
RAW, Herringbone

Use a combination of stitches to create this long fun necklace that encases pictures of what you love most. All of the components are reversible and customized using either personal pictures, magazines, or colorful paper.

### Australian Mist Bracelet



Fri 9/13 (10-5)  
\$95.00  
+ supplies  
Prerequisites:  
Peyote, RAW  
Skill Level:  
Intermediate  
Technique:  
Peyote, RAW

Create a base seamlessly blended from right angle weave to peyote and embellish with different sized chaton stones which create a cool texture of raised and flat beadwork.

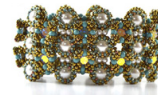
### Kira Marie Necklace



Sat 9/14 (10-5)  
\$95.00  
+ supplies  
Prerequisites:  
Peyote, RAW  
Skill Level:  
Intermediate  
Technique:  
Peyote, RAW

Create this fun necklace alternating Swarovski sparkly chatons and pearls with a large pear drop. This necklace can be made as components or beaded directly off of the previous work.

### Deep Sea Diamonds



Sun 9/15 (10-5)  
\$95.00  
+ supplies  
Prerequisites:  
Peyote, RAW,  
CRAW  
Skill Level:  
Intermediate  
Technique:  
Peyote, RAW,  
CRAW

Rows of large pearls encased with bead work create the base of this bracelet. Working in textured layers capture Swarovski chatons for that glitter of light. Students will work in a combination of several stitches to encase pearls and create bezels in open sections.



## Carole Tripp

### Peyote Bracelet



Wed 9/18 (10-1) OR (6-9)  
\$25.00 + supplies  
Prerequisites: None  
Skill Level: Beginner  
Technique: Peyote

Learn flat even count peyote stitch or practice your newly acquired skills while making this bracelet. Learn how to read a graph, make a picot edging and more.

### CRAW Bracelet



Wed 9/25 (10-1) OR (6-9)  
\$95.00 + supplies

Prerequisites: None  
Skill Level: Beginner  
Technique: Right Angle Weave

Learn the basics of CRAW while making a bracelet. Cubic RAW is the basis of many projects these days. Using various beads and bead sizes create different looks and will be discussed



## Melissa Grakowski Shippee

Take 2 classes for \$185.00 • Take 3 classes for \$275.00

### Ebb & Flow Necklace



Fri 9/20 (10-5)  
\$95.00 + supplies  
Prerequisites:  
3-Sided PRAW, Peyote  
Skill Level: Advanced  
Technique:  
3-Sided PRAW, Peyote

Learn how to use 3-sided prismatic RAW to make components that vary in color to create an ombre effect, and how to capture a Swarovski nautilus stone in setting with surrounding beadwork.

### Harvest Moon Bracelet



Sat 9/21 (10-5)  
\$95.00 + supplies  
Prerequisites:  
Bead Embroidery  
Skill Level: Intermediate  
Technique:  
Bead Embroidery

Two curling sets of leaves frame a Swarovski flatback crystal and meet in the back of the bracelet at an invisible closure, forming a bead embroidery bracelet. Learn Melissa's unique bead embroidery techniques.

### A Midsummer Night's Vine



Sun 9/22 (10-5)  
\$95.00 + supplies  
Prerequisites:  
3-Sided PRAW, Peyote,  
Tubular Herringbone  
Skill Level: Intermediate/Advanced  
Technique: 3-Sided PRAW, Peyote,  
Tubular Herringbone

Create this gorgeous statement necklace using a combination of bead weaving techniques. The different components in the necklace offer samples of different techniques and uniquely stitched flowers and vines make this a challenging yet doable project.



## Liz Smith

### Luscious Lariat



Sat 9/28 (10-5)  
\$85.00 + supplies  
Prerequisites: Needle & Thread  
Handling Experience  
Skill Level: All Skill Levels  
Technique: Stringing, Fringing

This flexible and unique wearable project is an interesting combination of popular beadweaving techniques. You will be expanding your beading skills as you explore design.



## Jo Ellen Lee

### Traditional Knotting with a Contemporary Twist



Thu 9/5 (6-9)  
\$30.00  
+ supplies  
Prerequisites: None  
Skill Level: All Skill Levels  
Technique: Knotting

Learn to knot a strand of pearls like a professional, make a double strand, or extended length necklace.

### Turkish Bead Crochet



Sun 9/29 (10-5)  
\$70.00 + supplies  
Prerequisites:  
Some Seed Bead  
Experience  
Skill Level: All Skill Levels  
Technique: Bead Crochet

Learn a variation of bead crochet resembling spiral stitch, but easier than traditional bead crochet. This class is a technique class.



## Corinne Loomer

### Bead Embroidery Independent Study



**\$150.00 for series + supplies  
OR \$50.00 per class + supplies**

Unlike a highly structured class this course allows you to be in control of your vision. The aim of this course of study is to help you stay focused, work independently, plan your creation, organize your ideas and learn how to make them a reality. Every month we'll discuss various topics about Bead Embroidery and how to make it work for you.

**Prerequisites:** Peyote  
**Skill Level:** All Skill Levels  
**Technique:** Peyote, Bead Embroidery

**Tue 9/3 (11-3) AND  
Tue 10/1 (11-3) AND  
Tue 11/5 (11-3) AND  
Tue 12/3 (11-3)**



# October

## Beyond Beadery Swarovski Crystal Beads Trunk Show

**Fri 10/11-Sun 10/13**  
(during regular store hours)

## Tracy Stanley

### Trunk Show of Tracy's Kits, Pattern & Goodies

**Fri 10/4-Sun 10/6** (during regular store hours)

Take 2 classes for \$185.00  
Take 3 classes for \$275.00

### Be Still My Heart

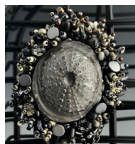


**Fri 10/4 (10-5)**  
**\$95.00 + supplies  
+ \$15 Materials fee\***  
**Prerequisites:** Basic Wire Wrap  
**Skill Level:** All Skill Levels  
**Technique:** Wire Work,  
Texturing, Embellishing

Experiment with multiple techniques for coloring polystyrene plastic to make one of a kind components. Learn to texture metal, rivet, add bead borders and use wire to create this pendant. If hearts aren't your thing...no worries you can make your piece any shape you desire!

\*See class description [creativecastle.com](http://creativecastle.com) for Materials content

### Sea Urchin Pendant & Earrings



**Sat 10/5 (10-5)**  
**\$95.00 + supplies  
+ \$35 Materials fee\***  
**Prerequisites:** Beading Basics,  
Some Needle & Thread Handling  
**Skill Level:** All Skill Levels  
**Technique:** Mold Use, Porcelain  
Clay, Beading

In this class you will create your own sea urchin molds and then cast pieces using a porcelain clay. Learn techniques to color your piece and then how to embellish these pieces to create your own unique pendants and earrings.

### Queen Bee Pendant



**Sun 10/6 (10-5)**  
**\$95.00 + supplies  
+ \$15 Materials fee\***  
**Prerequisites:** Basic Wire Wrap  
**Skill Level:** All Skill Levels  
**Technique:** Coloring on Plastic  
& Metal, Texturing Metal,  
Riveting & Wire Wrap

Explore ways to color and shape polystyrene plastic, texture metal, experiment with different methods of coloring metals and riveting. Combining all these methods along with some wire wrapping to create this truly fun piece.

## Isabella Lam

### Trunk Show of Isabella's Kits

**Thu 10/24-Sun 10/27** (during regular store hours)

Take 2 classes for \$185.00 ♦ Take 3 classes for \$275.00  
Take all 4 classes for \$360.00

### Wishes



**Thu 10/24 (10-5)**  
**\$95.00**  
**+ supplies Kit: \$105.00**  
**Prerequisites:** RAW  
**Skill Level:** Intermediate  
**Technique:** RAW, Unique,  
Bezelling Techniques

This necklace features a new way to fashion a beaded bezel for a Swarovski Fancy pear stone with rivolis. This dazzling pendant is attached to a fabulous beaded necklace. The embellishing techniques used in the necklace can be used to make any necklace unique to your style.

### Louie



**Fri 10/25 (10-5)**  
**\$95.00 + supplies**  
**Kit: \$90.00**  
**Prerequisites:** CRAW  
**Skill Level:**  
Intermediate/Advanced  
**Technique:** CRAW, Basic  
Beading Techniques

Creating Louie bracelet students will enjoy exploring new ways to create a beautiful beaded bracelet. I will guide you through several different techniques to create this beautiful and perfect opulent bracelet.

### Frozen Storm



**Sat 10/26 (10-5)**  
**\$95.00 + supplies Kit: \$115.00**  
**Prerequisites:** Herringbone  
**Skill Level:**  
Intermediate  
**Technique:** Herringbone,  
Unique Bezelling Techniques

Creating Frozen Storm Necklace students will enjoy exploring new ways to create a beaded bezel for a Swarovski Oval Fancy stone and to attached to a beautiful beaded herringbone necklace to create perfectly opulent necklace.

## Linda Kavalsky

### Bezels



**Sat 10/19 (10-5)**  
**\$85.00 + supplies**  
**Prerequisites:** Some Wire Work  
**Skill Level:** All Skill Levels  
**Technique:** Sheet Metal  
Manipulation, Fusing, Soldering

Fused mixed metals, bezeled stones and trinkets enhance this unique pin or pendant. Learn how to add in a bezeled stone, face, button or trinket and achieve a unique art to wear.

### Crystal Halo



**Sun 10/27 (10-5)**  
**\$95.00 + supplies**  
**Kit: \$115.00**  
**Prerequisites:** RAW  
**Skill Level:** Intermediate  
**Technique:** RAW, Unique  
Bezelling Techniques

Creating Crystal Halo necklace students will enjoy exploring new ways to create a beaded bezel for a Swarovski rivoli and round stones and attach them with a beautiful beaded connection motif to create perfectly opulent necklace.

## Carole Tripp

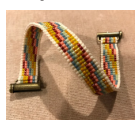
### RAW Embellished Bracelet



**Wed 10/2 (10-1) OR (6-9)**  
**\$25.00 + supplies**  
**Prerequisites:** None  
**Skill Level:** Beginner  
**Technique:** RAW

Learn right angle weave while crafting this beautiful bracelet. Students will learn to embellish RAW with crystals and attach a tube clasp. The abbreviation for right angle weave is RAW.

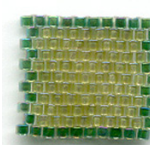
### Square Stitch Bracelet



**Wed 10/9 (10-1) OR (6-9)**  
**\$25.00 + supplies**  
**Prerequisites:** None  
**Skill Level:** Beginner  
**Technique:** Square Stitch

Learn the basics of this off loom stitch while making a bracelet. Square stitch has the look of loom work without those pesky warps. This technique is perfect for small pieces without warping a loom. Students will learn how to attach a clasp.

### Brick Stitch Basics



**Wed 10/30 (10-1) OR (6-9)**  
**\$25.00 + supplies**  
**Prerequisites:**  
None  
**Skill Level:** Beginner  
**Technique:** Brick Stitch

Learn the basics of flat brick stitch. Increasing, decreasing, and how to read a pattern is discussed



# November

## MANNA Fundraiser

Tue 11/19 - Sun 11/24 (during regular store hours)



### Nancy Cain

### Nancy Cain Trunk Show

Thu 11/7 - Sun 11/10 (during regular store hours)

Take 2 classes for \$185.00 ♦ Take 3 classes for \$275.00  
Take all 4 classes for \$360.00

#### Synchronicity



Thu 11/7 (10-5)  
\$95.00 + supplies  
Prerequisites:

**Peyote Skill Level: Intermediate**  
**Technique: Peyote, Netting**

Engineered using Pinch-in-the-Ditch for construction and strength, the center rivoli pendant is an especially significant element as it has no visible external structure. Together with the rivoli pendant, the weight of the Rollo chain balances the beaded rings and sculptural netting segments in perfect synchronicity. There are two ways of connecting the chain for a completely different look.

#### Feathers



Fri 11/8 (10-5)  
\$95.00 + supplies  
Prerequisites:  
**Flat & Circular Peyote**  
**Skill Level: Intermediate**  
**Technique: Peyote, Tubular Chenille**

My Feathers necklace is made with circular peyote creating a unique open sided bezel for the Swarovski stones in the pendant portion and tubular Chenille stitch for the rope. The fringed feathers will help the students understand the inherent issues with flat peyote regarding twists and curling.

#### Alice Frances



Sat 11/9 (10-5)  
\$95.00 + supplies  
Prerequisites: **Peyote**  
**Skill Level: Intermediate**  
**Technique: Peyote, Chenille, Embellishment**

I have used circular peyote with a layering technique I developed called Pinch-in-the-Ditch to create a brooch style pendant. This allows a stronger and thicker bezel base for a large 30x22mm Swarovski stone. Chain fringe drapes from the pendant and suspends from a chenille rope accented with Swarovski crystals and pearls.

#### Belissima



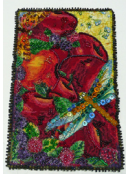
Sun 11/10 (10-5)  
\$95.00 + supplies  
Prerequisites: **Flat & Circular Peyote**  
**Skill Level: Intermediate**  
**Technique: Flat & Circular Peyote**

The 25x18mm center jewel is made with an open bezel so the color flashes out the sides of the beadwork. Each individual connected arch component is created with odd-count peyote with Pinch-in-the-Ditch and edged with Swarovski crystal beads. Articulated arches flex around your wrist for a comfortable fit.



### Corinne Loomer

#### Bead Embroidery Independent Study



Tue 9/3 (11-3) AND  
Tue 10/1 (11-3) AND  
Tue 11/5 (11-3) AND  
Tue 12/3 (11-3)

Prerequisites: **Peyote**  
**Skill Level: All Skill Levels**  
**Technique: Peyote, Bead Embroidery**

\$150.00 for series + supplies  
OR  
\$50.00 per class + supplies

Use this class to stay focused, work independently, plan your creation, organize your ideas and learn how to make them a reality. Every month we'll discuss various topics about Bead Embroidery and how to make it work for you.



### Carole Tripp

#### Herringbone Bracelet



Wed 11/13 (10-1) OR (6-9)  
\$25.00 + supplies  
Prerequisites: **None**  
**Skill Level: All Skill Levels**  
**Technique: Tubular Herringbone**

Learn tubular herringbone also known as N'debele while making this fashionable bracelet.



### Jo Ellen Lee

#### Traditional Knotting with a Contemporary Twist



Thu 11/14 (6-9)  
\$30.00 + supplies  
Prerequisites: **None**  
**Skill Level: All Skill Levels**  
**Technique: Knotting**

Learn to knot a strand of pearls like a professional, make a double strand, or extended length necklace. It doesn't have to be just your mother's pearls, give it spunk, sparkle, and texture! Add crystals, gemstones or glass beads, to make a truly fantastic piece!



### Melanie Schow

#### Charmed



Sun 11/17  
(12:30-4:30)  
\$55.00 + supplies  
Prerequisites: **Knowledge of Wire Work**  
**Skill Level: Intermediate**  
**Technique: Wire Work**

Create a bracelet or necklace using your favorite beads. techniques for producing consistent quality links will be covered. Pull together a collection of beads, and using a variety of head pins (custom made or purchased), learn to wrap each bead.

### Open House



(during regular store hours)



### Registration

- Registration by phone or in person.
- Pre-registration and payment in full at time of registration is required for all classes and workshops. Classes will cancel if not full and a refund given.
- 3 weeks notice of cancellation prior to the first class taught by a guest instructor is required. A guest instructor is anyone not employed by Creative Castle. Credit will be given toward a future class if the space can be filled. Instructions will be available to the student if the space cannot be filled.
- 72 hours notice of cancellation prior to other classes is required to receive credit toward a future class.
- Cancellations after 72 hour notice for other classes will receive credit for 1/2 class fee toward a future class.
- No show = no credit. Instructions from the class will be available.

### Private Lessons

\$25.00 per hour  
2 hour minimum

Take private lessons on any of the basic classes, get help with a class project.

Schedule one of our experienced bead artisans to assist you for a successful project outcome.

### Beadiquette®:

- Please be mindful of instructors and fellow students by refraining from wearing fragrances to class, as participants with allergies and asthma could be affected.
- Please mute cell phone volume during class, and excuse yourself from the classroom when responding to or initiating cell calls.
- Please remember the class is a learning environment as well as a social time. Loud talking can be distracting and disruptive to your fellow students.



## Marlene McCall

### Beading Basics II



Sun 12/1 (1-4)  
\$30.00 + supplies

**Prerequisites:**  
**Beading Basics I**

**Skill Level:**  
**Beginner/Intermediate**

**Technique:**  
**Bead Stringing, Wire Wrap, Finishing Techniques**

Know the basics but want to make professional looking pieces? Need some information on making your own ear wires and clasps, how to use cones or wrapping briolettes and making bails? Learn the special details that add just that little touch to make your designs really shine.



## Corinne Loomer

### Bead Embroidery Independent Study



\$150.00 for series + supplies OR  
\$50.00 per class + supplies

Tue 9/3 (11-3) AND  
Tue 10/1 (11-3) AND  
Tue 11/5 (11-3) AND  
Tue 12/3 (11-3)

**Prerequisites:**

Peyote

**Skill Level:**

All Skill Levels

**Technique:**

Peyote, Bead Embroidery

Love Bead Embroidery? Crazy Quilting? Just sewing beads on clothes? Are you stuck on where to take what you love to do to the next level? Then maybe a course of Independent Study is just what you need to get you going on your own creative path. Unlike a highly structured class this course allows you to be in control of your vision. The aim of this course of study is to help you stay focused, work independently, plan your creation, organize your ideas and learn how to make them a reality. Every month we'll discuss various topics about Bead Embroidery and how to make it work for you.



## Carole Tripp

### Loom Beading



Sat 12/14 (noon-5)  
\$35.00 + supplies

**Prerequisites:** None  
**Skill Level:** Beginner  
**Technique:** Loom

Learn to warp a small loom, weave and finish off a bracelet. Various ways of finishing will be discussed.

## Technique Classes

### Beading Basics with Marlene McCall

#### Beading Basics I

Learn the fundamentals of basic bead stringing AND basic wire-wrap techniques. Supplies, findings and tools are discussed. Learn the basics of stringing using various materials and to work with wire to combine it with chain and beads.

Thu 9/26 (6-9) OR  
Thu 10/17 (6-9) OR  
Thu 11/21 (6-9) OR  
Thu 12/12 (6-9) OR  
Sat 12/28 (1-4)

\$30.00  
supplies included  
**Prerequisites:**  
None  
**Skill Level:**  
Beginner

#### Beading Basics II

Know the basics but want to make professional looking pieces? Need some information on French wire, cones, crimp covers, wrapping briolettes, bead tips, wiring leather cord and making decorative spirals? Learn these, plus a discussion on finishing your problem pieces.

Thu Dec 1 (1-4)  
\$30.00 + supplies

**Prerequisites:**  
Beading Basics I  
**Skill Level:**  
Advanced Beginner

### Seed Bead Weaving Techniques with Carole Tripp

#### Peyote Bracelet

Wed 9/18  
\$25.00 + supplies  
(10-1) OR (6-9)

Learn flat even count peyote stitch or practice your newly acquired skills while making this versatile bracelet. Learn how to read a graph, make a picot edging and attach a multi-strand clasp.

#### CRAW

Bracelet  
Wed 9/25  
\$25.00 + supplies  
(10-1) OR (6-9)

Learn the basics of CRAW while making a bracelet. CRAW is the basis of many projects these days. Using various beads and bead sizes create different looks and will be discussed

#### RAW

Embellished  
Bracelet  
Wed 10/2

\$25.00 + supplies  
(10-1) OR (6-9)  
Learn RAW while crafting this beautiful bracelet. Learn to embellish with crystals and attach a tube clasp. The abbreviation for right angle weave is RAW.

#### Square

Stitch  
Bracelet  
Wed 10/9

\$25.00 + supplies  
(10-1) OR (6-9)  
Learn the basics of this off loom stitch while making a bracelet. This technique is perfect for small pieces without warping a loom. Students will learn how to attach a clasp.

#### Brick Stitch

Basics  
Wed 10/30  
\$25.00 + supplies  
(10-1) OR (6-9)

Learn the basics of flat brick stitch. Increasing, decreasing, and how to read a pattern is discussed.

#### Seed Bead

Stitch  
Intensive  
Sat 11/2

\$65.00 + supplies  
(10-5)  
Learn as many of the off loom stitches as your brain can absorb in this 1 day intensive. Students will learn stitches; there will be no project made in class.

#### Herringbone

Bracelet  
Wed 11/13  
\$25.00 + supplies  
(10-1) OR (6-9)

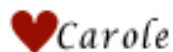
Learn tubular herringbone also known as N'debele while making this fashionable bracelet.

#### Loom

Beading  
Sat 12/14

\$35.00 + supplies  
(noon-5)  
Learn to warp a small loom, weave and finish off a bracelet. Various ways of finishing will be discussed

*I would like to take this opportunity to thank each of you  
for shopping and taking classes at Creative Castle.  
Your continued support allows us to continue to do what we love to do.  
Thank you for 30 wonderful years!*







# Finter Classes

Mon	Tue	Wed	Thu	Fri	Sat	Sun
<b>September</b>			LABOR DAY Clearance SALE! (9/3-9/8)			1 Special Beading at the Castle (noon-5)
2 LABOR DAY CLOSED	3 Corinne Loomer Bead Embroidery Independent Study (11-3)	4	5 Jo Ellen Lee Traditional Knotting with a Contemporary Twist (6-9)	6	7	8
9 CLOSED	10 Beading at the Castle (11-3)	11	12 Liisa Turunen Memory Lane Necklace (10-5)	13 Liisa Turunen Australian Mist Bracelet (10-5)	14 Liisa Turunen Kira Marie Necklace (10-5)	15 Liisa Turunen Deep Sea Diamonds (10-5)
16 CLOSED	17	18 Carole Tripp Peyote Bracelet (10-1) OR (6-9)	19	20 Melissa Grakowsky Shippee Ebb & Flow Necklace (10-5)	21 Melissa Grakowsky Shippee Harvest Moon Bracelet (10-5)	22 Melissa Grakowsky Shippee - A Midsummer Night's Vine (10-5)
23 CLOSED	24 Beading at the Castle (11-3)	25 Carole Tripp CRAW Bracelet (10-1) OR (6-9)	26 Marlene McCall Beading Basics (6-9)	27	28 Liz Smith Luscious Lariat (10-5)	29 Jo Ellen Lee Turkish Bead Crochet (10-5)
CLOSED 30						
<b>October</b>			3	4 Tracy Stanley Be Still My Heart (10-5)	5 Tracy Stanley Sea Urchin Pendant & Earrings (10-5)	6 Tracy Stanley Queen Bee Pendant (10-5)
7 CLOSED	8 Beading at the Castle (11-3)	9 Carole Tripp Square Stitch Bracelet (10-1) OR (6-9)	10	11	12	13
14 CLOSED	15	16	17 Marlene McCall Beading Basics (6-9)	18	19 Linda Kavalsky Bezels (10-5)	20
21 CLOSED	22 Beading at the Castle (11-3)	23	24 Isabella Lam Wishes (10-5)	25 Isabella Lam Louie (10-5)	26 Isabella Lam Frozen Storm (10-5)	27 Isabella Lam Crystal Halo (10-5)
28 CLOSED	29	30 Carole Tripp Brick Stitch Basics (10-1) OR (6-9)	31 Special Hours OPEN 10-3 Halloween			
<b>November</b>				1	2 Carole Tripp Off Loom Seed Bead Stitch Intensive (10-5)	3 Special Beading at the Castle (noon-5)
4 CLOSED	5 Corinne Loomer Bead Embroidery Independent Study (11-3)	6	7 Nancy Cain Synchronicity (10-5)	8 Nancy Cain Feathers (10-5)	9 Nancy Cain Alice Frances (10-5)	10 Nancy Cain Belissima (10-5)
11 CLOSED	12 Beading at the Castle (11-3)	13 Carole Tripp Herringbone Bracelet (10-1) OR (6-9)	14 Jo Ellen Lee Traditional Knotting with a Contemporary Twist (6-9)	15	16	17 Melanie Schow Charmed (12:30-4:30)
18 CLOSED	19	20	21 Marlene McCall Beading Basics (6-9)	22	23 Special Beading at the Castle (11-5)	24
25 CLOSED	26 Beading at the Castle (11-3)	27 Special Hours OPEN 10-3	28 CLOSED FOR THANKSGIVING	29	30	
<b>December</b>						1 Marlene McCall Beading Basics II (1-4)
2 CLOSED	3 Corinne Loomer Bead Embroidery Independent Study (11-3)	4	5	6	7	8
9 CLOSED	10 Beading at the Castle (11-3)	11	12 Marlene McCall Beading Basics (6-9)	13	14 Carole Tripp Loom Beading (noon-5)	15 Special Beading at the Castle (noon-5)
16 CLOSED	17	18	19	20	21	22
23 CLOSED	24 Special Hours OPEN 10-2	25 CLOSED FOR CHRISTMAS	26	27	28 Marlene McCall Beading Basics (1-4)	29 Special Beading at the Castle (noon-5)
CLOSED 30	31 New Year's Eve Bead Day (11-4)					